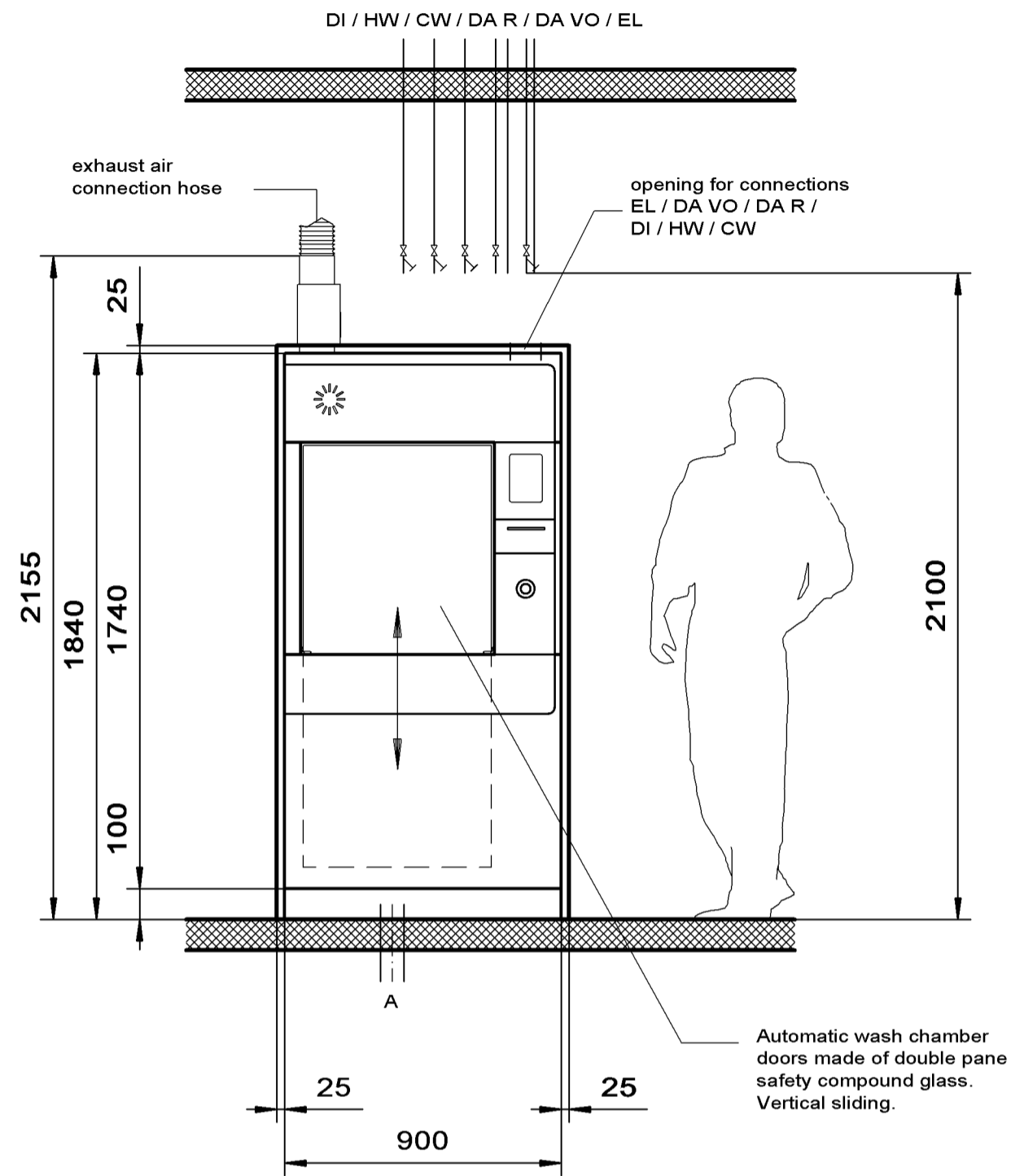
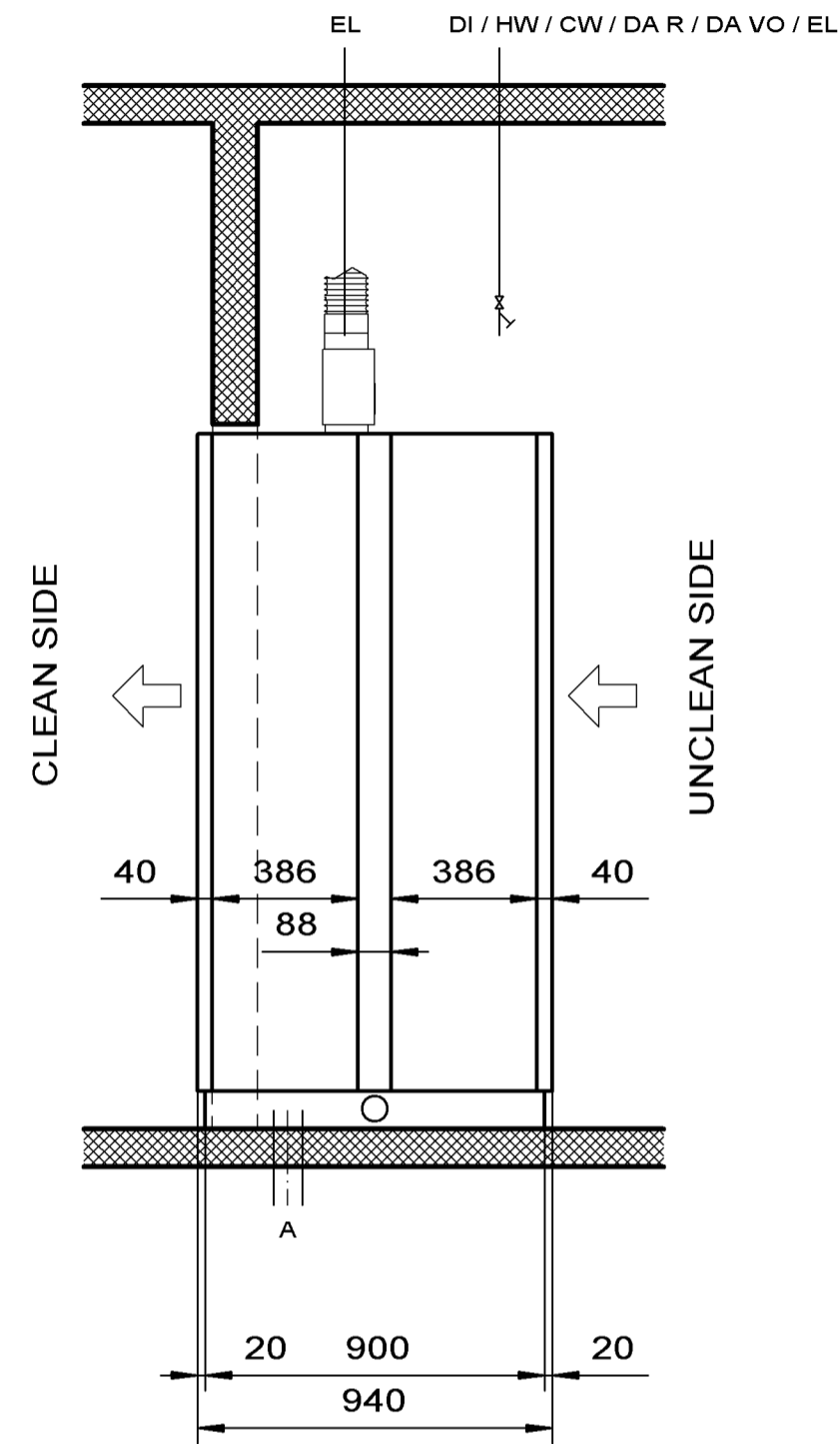


VIEW UNCLEAN SIDE



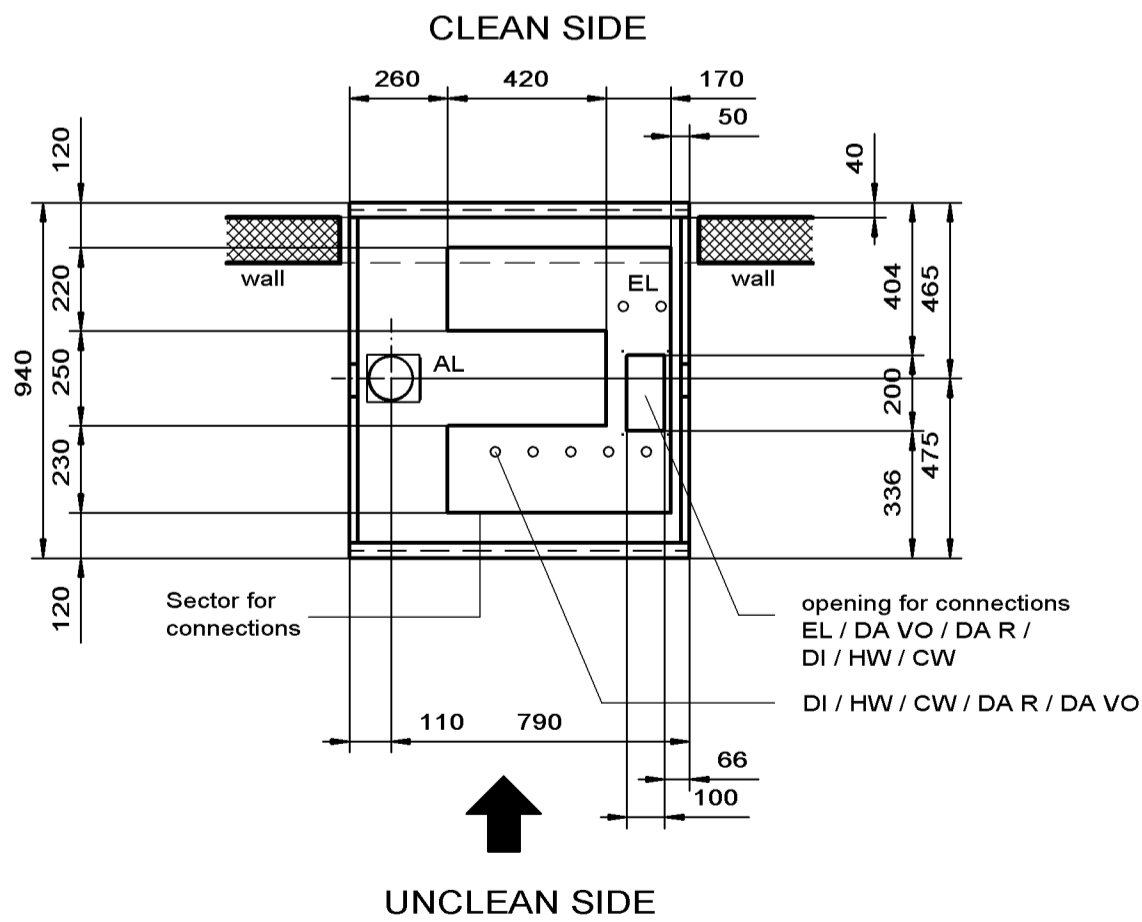
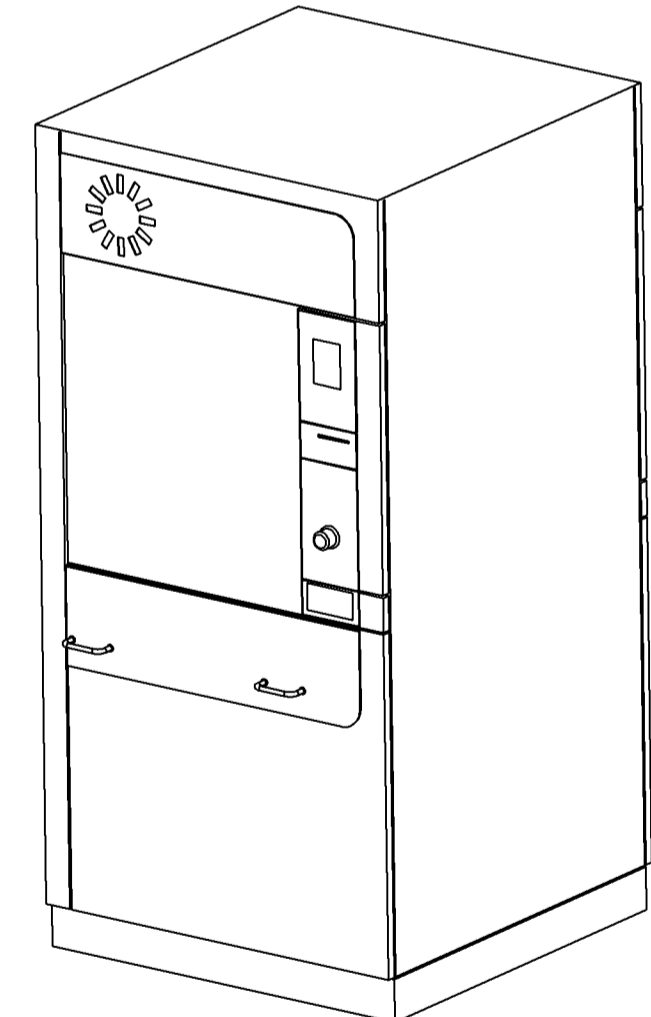
VIEW SIDE



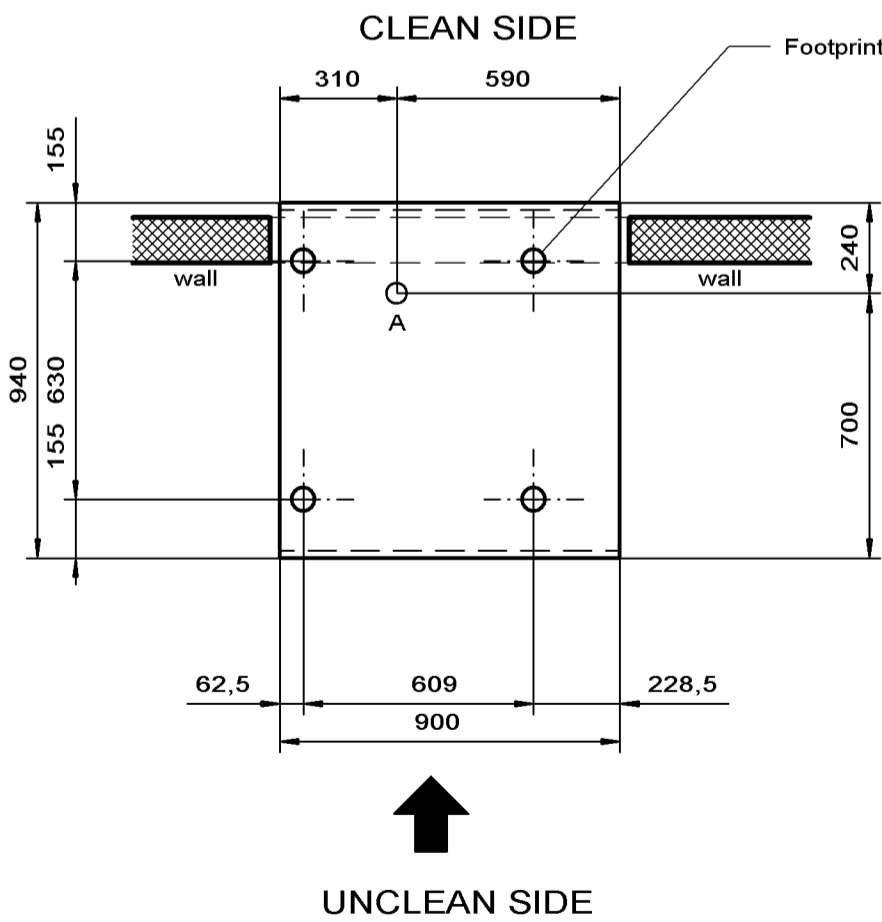
Connection Conditions Installation Preparation	
Building Side	Machine Side Delivery
CW, HW, DI Water Connections Shut off valve 3/4"	2m armored hose Fine filter 3/4" mesh gauge 250u Free flow area
A Drain Floor drain siphoned, 90° C heat resistant Drain stud DO 56mm	T-piece for condensate drainage KD= DO 28mm Drain hose DI 56mm
AL Exhaust Air Drain pipe DI 115mm	Exhaust air duct DO 114mm Condensed water collector with drain Exhaust air damper with ambient air opening
EL Electric Connection 50Hz 400V 3N AC 40Amp 60Hz 208V 30Amp 3P USA 60/50 Hz 200V 50Amp 3P Japan	All pole main switch 52A cable 5x2.5mm ² , L= 3m, HO7 RN-F protective hose G16 L= 1.3m, cable 4xAWG 8, L= 4m cable 4x10mm ² , L= 4m
DA Connection 2 shut-off valves 1/2 " 1 Dirt traps 1/2"	2 T-pieces 1/2" 1 2/2"-way magnetic valve 1/2" (24 VAC) Steam heat dryer 2 2/2"-way magnetic valve 1/2" (24 VAC) 2 welding sleeves 1/2" 2/3 condensate traps 1/2"

WD290
machine over all:
W = 900 mm
D = 940 mm
H = 1840 mm

WD290
Basket dimensions:
W = 610 mm
D = 750 mm
H = 670 mm

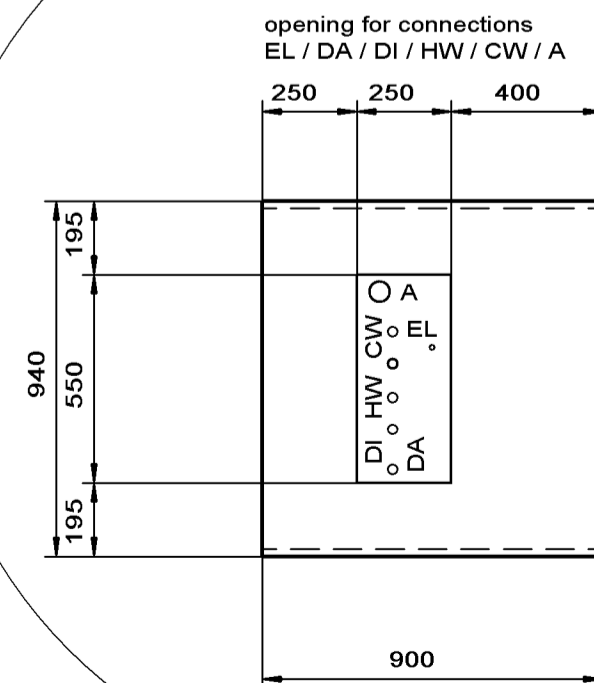


VIEW TOP COVER CONNECTION



VIEW TOP FLOOR CONNECTION

Variant : connection from bottom



WD290	Design : Marcel Mai
	Date : 01.03.2010
without condenser	Mstb. : 1:20 / A2
Belimed infection control	Belimed AG CH-6275 Ballwil Tel. 041 449 78 88 www.belimed.ch
	WD290-E WD290 / 02